

# Move Together

# Euromovers

- ▶ **Euromovers Overview & Vision**
- ▶ **Editorial Insights**
- ▶ **Industry Trends & Intelligence**
- ▶ **Member Highlights**
- ▶ **Country Specific Updates**
- ▶ **Members Contacts**



APRIL 2026

# ABOUT EUROMOVERS



Euromovers is an international alliance of independent moving and relocation companies. It operates as a global network of professional movers and relocation specialists, headquartered in Cologne, Germany, under the legal entity EUROMOVERS Worldwide Alliance SCE mbH. The network brings together leading removal partners to offer seamless international moving, storage, relocation, and specialized transport services. Euromovers itself does not directly contract with customers but connects clients with the nearest partner company in its network, each of which is responsible for delivering services under local terms and conditions.

## Mission

To provide high-quality, consistent, and reliable global relocation solutions by connecting and empowering our network of trusted companies. Through collaboration and shared standards, we ensure every move – corporate, household, or specialized – is handled professionally, efficiently, and with care. Our motto, “Let’s move together!,” embodies our commitment to supporting people and businesses through every relocation journey.

## Vision

To make every move a seamless and positive experience, combining integrated global reach with locally rooted expertise, so that individuals and businesses can transition confidently and smoothly across borders.

## Alliance Values

Euromovers values are centered around:

### COOPERATION & PARTNERSHIP

Building strong links among member companies so that knowledge, resources, and best practices are shared.

### QUALITY & STANDARDS

Every partner undergoes annual audits and quality management systems to ensure consistent service excellence.

### CLIENT-CENTRIC SERVICE

Focusing on individual and corporate client needs through personalized relocation support.

### GLOBAL COLLABORATION

Member companies work together under a common umbrella to provide broad geographic coverage.

## Global Presence

Euromovers comprises more than +70 experienced member companies across Europe, North America, Australia, Asia, and beyond. Its members are located in countries such as Germany, France, the United States, China, among others. This wide network enables Euromovers to handle international door-to-door removals, corporate relocations, storage solutions, and specialized transport for clients moving anywhere in the world.

In essence, Euromovers is not just a relocation provider – it is a global alliance built on quality, cooperation, and customer-focused moving solutions that support smooth transitions for individuals and businesses alike.

# TABLE OF CONTENTS

Front Cover	01
About Euromovers	02
Editorial Note	03
Industry updates	04-05
Members News	06-07
Country Wise Update	08
Members Directory	09
Back Cover	10

## Euromovers 2026: Adapting, Innovating, and Leading the Future of Global Relocation

As we step into 2nd QTR in 2026, the global relocation landscape continues to evolve at an unprecedented pace. The first quarter has brought a blend of challenges and opportunities for the Euromovers network, reinforcing the enduring importance of collaboration, adaptability, and consistently high-quality service delivery.

Across key markets, we are witnessing dynamic shifts in logistics and operations. While certain regions have experienced temporary disruptions—particularly at selecting our members’ resilience, professionalism, and proactive planning have ensured continuity of service for clients worldwide. In many cases, airfreight and alternative transport solutions have played a critical role in maintaining schedules and meeting client expectations. These adaptations highlight the growing importance of flexibility, creativity, and innovative thinking in overcoming operational challenges.

The true strength of Euromovers lies in its members. Over the past quarter, numerous companies within the network have achieved significant milestones.

These include the successful completion of internal quality audits, the integration of advanced digital tools to enhance efficiency and transparency, and the expansion of service offerings to meet the evolving needs of both corporate and private clients. Such achievements reflect a shared commitment to operational excellence, reliability, and professionalism across all service lines—whether handling household goods, corporate relocations, or specialized logistics.

Looking ahead, 2026 marks the beginning of several exciting initiatives aimed at strengthening communication, visibility, and knowledge sharing within the network. The upcoming launch of the monthly Euromovers magazine will provide a dedicated platform to showcase industry insights, best practices, and member success stories. In parallel, a targeted social media awareness program will enhance engagement with clients, partners, and stakeholders, while the rollout of a refreshed website will further improve accessibility, transparency, and global reach. Together, these initiatives will reinforce the network’s positioning and foster stronger connections across all touchpoints.

In light of the current operational environment, the Board has taken the decision to reschedule the Annual Conference in Dubai from April to November 2026. This adjustment ensures that all members, partners, and stakeholders can participate fully, safely, and meaningfully. The conference will remain a key platform for collaboration, knowledge exchange, and innovation, continuing to drive the network forward.

On behalf of the Board, Stephan Strauss extends sincere appreciation to all members, customers, agents, and shareholders for their continued dedication, professionalism, and support. Together, we remain committed to strengthening our network, supporting one another, and delivering exceptional relocation experiences across the globe.



### STEPHAN STRAUSS

Euromovers Board

Editorial Note – April 2026

# GLOBAL MOBILITY & LOGISTICS INDUSTRY NEWS – 2026

The relocation and logistics landscape in 2026 is shaped by geopolitical tensions, economic pressures, and rapid technological change. Conflicts in Eastern Europe, the Middle East, and parts of Asia are disrupting supply chains, freight routes, and corporate mobility. Companies are balancing risk, compliance, and cost while prioritizing efficiency, sustainability, and digital solutions.

## GLOBAL MOBILITY TRENDS: REMOTE WORK & CONFLICT IMPACT

Remote and hybrid work continue to influence mobility, but geopolitical risks are reshaping destination choices. Employees are relocating away from conflict-prone regions toward stable, tax-friendly countries such as Singapore, UAE, Portugal, and Canada. Companies are adopting short-term assignments alongside permanent moves to maintain flexibility.

Relocation providers are strengthening digital onboarding, security briefings, and crisis support. Shipment consolidation and safe housing solutions are increasing, as mobility strategies now integrate risk with cost and employee experience. Sustainability remains a priority, with greener transport aligned to secure routes.



Inflation and geopolitical instability are driving up relocation costs. Disruptions in the Black Sea, Red Sea, and parts of Asia are causing freight surcharges and air cargo volatility. Port delays, customs bottlenecks, and rising insurance premiums are common in high-risk regions.

Storage and warehousing costs are increasing in safer locations due to demand shifts. Companies are adopting flexible contracts, alternative routes, and risk-adjusted budgets, supported by predictive analytics. Providers offering real-time visibility and proactive planning are gaining a competitive edge.

## MARKET INTELLIGENCE: RISING COSTS & DISRUPTIONS



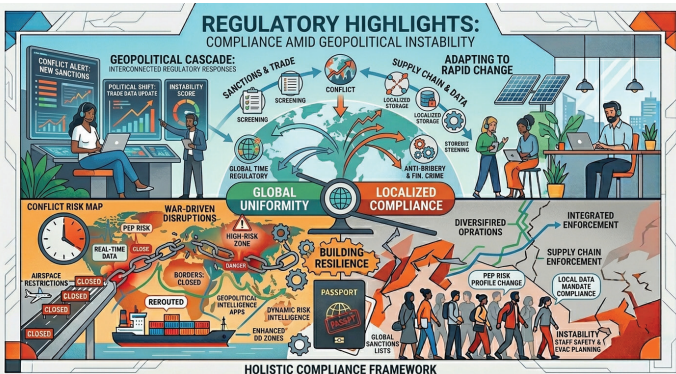
## FREIGHT & LOGISTICS: MULTIMODAL & RISK-AWARE ROUTING



Multimodal logistics is becoming more risk-aware. Companies are combining ocean, rail, and air transport to bypass conflict zones and congestion. For example, routes are shifting from the Black Sea to the Mediterranean, while Middle East operations increasingly use secondary ports in Oman and the UAE.

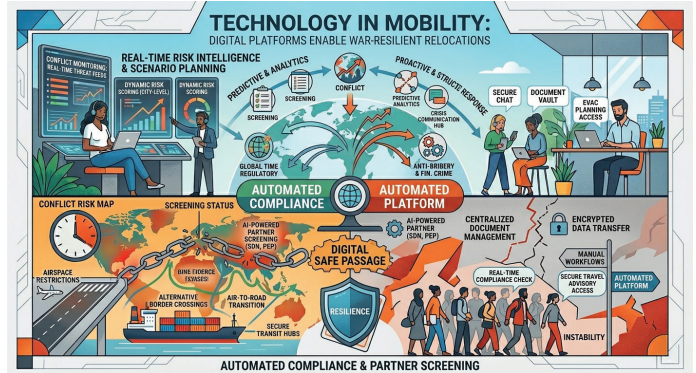
AI-driven routing and automated documentation help manage sanctions, airspace restrictions, and port closures. Logistics strategies now balance cost, speed, sustainability, and geopolitical risk, marking a major shift in planning.

## REGULATORY HIGHLIGHTS: COMPLIANCE IN UNCERTAIN TIMES



Regulations are increasingly influenced by sanctions, export controls, and security restrictions. Companies must navigate visa limits, trade barriers, and stricter customs processes in affected regions. Digital tools such as blockchain for proof of origin, automated customs systems, and AI compliance monitoring enable smoother operations. Integrating regulatory intelligence with risk management is essential to avoid delays and penalties.

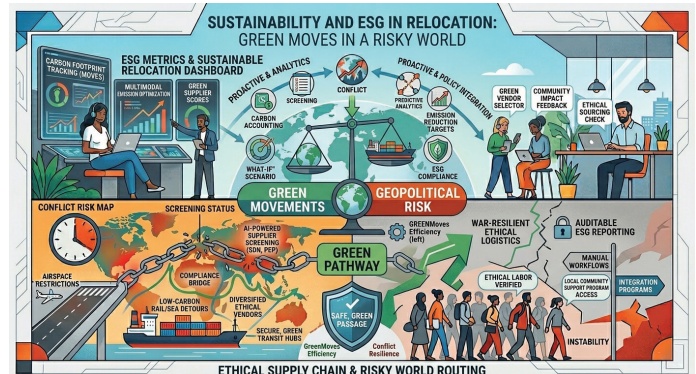
## TECHNOLOGY IN MOBILITY: DIGITAL & RESILIENT SOLUTIONS



Technology is a key risk mitigation tool in 2026. Mobility platforms now integrate tracking, housing, immigration, and safety services, enabling real-time response to disruptions.

AI supports predictive planning and rerouting, while mobile apps offer live updates and self-service options. Virtual surveys reduce on-site visits, and cloud systems ensure seamless multi-country coordination despite geopolitical challenges.

## SUSTAINABILITY & ESG: GREEN MOVES IN A RISKY WORLD



Sustainability remains central despite global risks. Companies are adopting eco-friendly packing, fuel-efficient transport, and carbon-neutral moves while avoiding unsafe routes.

ESG priorities now include employee safety, ethical sourcing, and community impact. Green initiatives such as shipment consolidation and alternative routing reduce both carbon footprint and operational risk, reflecting a more resilient and responsible industry.

# MEMBERS NEWS



## Driving the Future of Logistics in India with APML's 24x7 Command Centre

What if every shipment moved like a space mission? Agarwal Packers and Movers Ltd. (APML) is making that a reality through its 24x7 Command Centre in Mumbai—a control tower managing thousands of moves with real-time intelligence.

With GPS-enabled fleets, AI analytics, and live dashboards, every consignment is tracked continuously, enabling instant rerouting, disruption avoidance, and on-time delivery. AI voice bots, SOS-enabled systems, and intelligent risk detection further enhance safety and communication. APML also uses containerized transport and a growing electric fleet, reducing handling risks and supporting sustainability. By combining advanced technology with skilled teams and responsive customer interfaces, APML ensures efficiency at every step. With over 2.86 million moves globally and 38 years of experience, APML is India's largest and most trusted mover, evolving into a future-ready, tech-driven logistics leader.



## ISS Relocations – Regional Operations Update

As we move through March, ISS Relocations continues to adapt to the evolving logistics landscape in the Middle East and South Asia. Sea freight is currently constrained: Jeddah (Saudi Arabia) and Salalah (Oman) remain operational, while other regional ports are limited or closed.

Air freight from the UAE, Oman, and Saudi Arabia remains available for time-sensitive shipments. Our teams are coordinating with partners and clients to optimize alternative routes and minimize disruptions. Operations in India, Sri Lanka, and the Maldives continue normally, with ports and air networks fully functional. Local teams support inbound and outbound shipments while maintaining service standards. ISS Relocations remains committed to seamless relocation solutions, continuously monitoring port and flight updates and providing guidance to clients and partners. For queries or support, please contact your ISS Relocations representative.



**Jordanian Coast Cargo Services**, based in Amman, is a trusted relocation and logistics partner serving Jordan and the wider region. We provide international household goods moving, fine art handling, pet relocation, and secure storage for corporate clients, embassies, NGOs, and private individuals. Recently, our team managed specialized projects, including the careful packing and transport of valuable fine art, following strict handling and protective procedures.

These projects highlight our commitment to precision, professionalism, and safeguarding high-value items throughout every stage of relocation. We continue to expand our international partnerships, working closely with networks like EUROMOVERS to offer reliable door-to-door services worldwide. Coordinating inbound and outbound relocations with trusted partners ensures smooth operations and dependable support for fellow agents. We look forward to ongoing collaboration across the network.



Founded in 1960, **Purdie Worldwide** is a third-generation family business providing expert moving and storage services across Scotland. Operating from three departments, we offer local, national, and international relocation solutions, combining decades of experience with exceptional customer service. Awarded BAR Domestic Mover of the Year in 2010, we are members of Euromovers, the International Association of Movers, and the Movers Trading Club.

We uphold nine annually assessed quality standards covering household moves, certified overseas relocations, and secure storage. From packing and transport to storage and delivery, our experienced team manages every step of your move, ensuring safety, efficiency, and peace of mind. At Purdie Worldwide, we handle every item with care and professionalism. Wherever life takes you, we deliver seamless moving and storage solutions. Contact us today for a free quote – Handling with Care...Anywhere!



## Mudinmar at ARCO Madrid: Bridging Art and Logistics

Last weekend, ARCO Madrid once again positioned Madrid at the heart of the international contemporary art scene. Galleries, artists, collectors, and cultural professionals from across the globe gathered at one of Europe's most important art fairs to showcase new exhibitions, discover emerging talent, and forge new partnerships.

Mudinmar was on site, reinforcing our expertise in specialized fine art transportation and exhibition logistics. Our colleague Tony connected with gallery owners, artists, and cultural project managers, laying the groundwork for exciting collaborations in art transport and logistics.

Events like ARCO Madrid create a dynamic flow of artworks between countries, galleries, museums, and private collections. Several last-minute packing and shipping requests during the fair underscored the need for reliable, expert logistics partners.

With fine art transport emerging as a strategic focus for Mudinmar in 2026, we are excited to support EUROMOVERS members and partners in art logistics projects and to collaborate across the network whenever opportunities arise.



## NEDRAC Marks Milestones in Global Relocation

NEDRAC proudly announces key achievements demonstrating our commitment to excellence in relocation and freight forwarding.

We have completed our Internal FAIM Audit and earned the FIDI Global Alliance IFA Certificate, reflecting our adherence to global quality and compliance standards.

NEDRAC is also recognized as an IAM Trusted Moving Company (ITMC), validating our ethical practices, financial accountability, and professional standards.

We celebrate team growth as well—Kathleen McArdle, Senior Move Coordinator, recently completed the Essentials in International Moving (EiM) seminar in Kuala Lumpur, enhancing her relocation expertise.

These milestones reaffirm NEDRAC's dedication to delivering reliable, high-quality relocation solutions worldwide.



## Rellogg Highlights: Sustainable Solutions and Innovative Workplace Services

Rellogg is expanding its offerings with sustainable, innovative solutions for modern workplaces. A recent highlight is dry-ice cleaning for office chairs—an eco-friendly, on-site method that removes dirt and bacteria without water or chemicals, extending furniture lifecycles and reducing waste.

Rellogg has also partnered with nature Office to enable clients to offset CO<sub>2</sub> emissions from relocation projects, providing certified compensation while supporting climate protection initiatives.

By combining refurbishment services, resource-saving processes, and transparent CO<sub>2</sub> compensation, Rellogg helps organizations lower their environmental footprint while ensuring efficient, flexible workplace operations.

Ongoing investments in sustainable services and innovative logistics reinforce Rellogg's position as a forward-thinking partner in workplace relocation and office furniture management.

# GLOBAL MOBILITY & RELOCATION – 2026

## OVERVIEW (COUNTRY-WISE)

### EUROPE

**Germany:** Energy-intensive industries shift partially to Eastern Europe/Asia; outbound technical talent. Digitized customs, rising energy/transport costs; sustainability adoption growing.

**France:** Regional restructuring drives steady inbound/intra-European relocations; environmental compliance and urban congestion encourage decentralized offices/distribution.

**United Kingdom:** Post-Brexit dual-location strategies (London/EU cities) drive cross-border relocations; Red Sea and Middle East disruptions raise logistics costs; strict customs compliance.

**Netherlands:** Tech/logistics hub; higher cargo volumes challenge ports but digital customs and sustainability reporting support efficiency.

**Italy:** Selective growth in manufacturing/luxury; mobility mostly local due to cost/administrative complexity.

**Spain:** Investments in renewables, technology, shared services drive inbound mobility; port congestion and shipping patterns managed carefully.

**Switzerland:** Stable inbound mobility for pharma, finance, technology; requires careful regulatory coordination; sustainability gaining importance.

**Belgium:** Central for multinational HQs/distribution; robust compliance strengthens logistics.

**Greece:** Growing as alternative Mediterranean trade corridor with expanding port infrastructure.

### AMERICAS

**United States:** Reshoring, tech expansion, selective downsizing drive domestic and international relocations; geopolitical tensions increase fuel/logistics costs; strict customs enforcement.

**Canada:** Stable growth and immigration-friendly policies sustain inbound relocations in tech, energy, infrastructure; logistics affected by shipping delays and weather; sustainability shaping operations.

### ASIA-PACIFIC

**China:** Multinational diversification into Southeast Asia; digitized customs; regulatory complexity requires local expertise; sustainability initiatives gradually expanding.

**India:** Supply chain diversification attracts manufacturing/tech investments; strong inbound relocation; infrastructure improvements and multimodal logistics enhance efficiency.

**Australia:** Skilled professionals attracted in healthcare, mining, technology; extended transit times and strict biosecurity regulations affect planning; sustainability shapes corporate strategy.

### MIDDLE EAST

**United Arab Emirates:** Leading mobility hub with inbound relocations from finance, tech, and regional HQ growth; stable infrastructure, efficient customs, and smart logistics support resilience despite regional shipping disruptions.

### KEY GLOBAL TRENDS (2026)

- ↻ Geopolitical disruptions reshape trade routes; rising energy/transport costs accelerate regionalization and nearshoring.
- ↻ Emerging markets (India, Southern Europe) drive inbound relocation growth.
- ↻ Customs digitalization and compliance central to operational efficiency.
- ↻ Sustainability is integral to logistics, mobility, and corporate location strategies.



# MEMBERS DIRECTORY



Bailly


ADVERTISING OPPORTUNITIES ARE AVAILABLE IN THE MAGAZINE  
 Interested member can contact the Euromovers HQ for further details.

# EUROMOVERS

EUROPEAN MOVER PARTNERSHIP  
INTERNATIONAL  
WORLDWIDE MOVERS ALLIANCE



 [info@euromovers.com](mailto:info@euromovers.com)

 [www.euromovers.com](http://www.euromovers.com)

